

ORDINANCE NO. 2021-3

AN ORDINANCE REDISTRICTING CITY WARDS

WHEREAS, cities have an obligation and a responsibility to ensure that wards are of substantially equal population; and

WHEREAS, an analysis of each city ward utilizing 2020 Census block data indicates the need for ward redistricting; and

WHEREAS, Arkansas law vests city councils with apportionment and redistricting, authority; and

WHEREAS, a redistricting plan has been prepared that equalizes ward population, and ensures compliance with equal protection clause requirements; and

WHEREAS, it is the desire of the City Council, that the ward redistricting plan, as recommended, be approved.

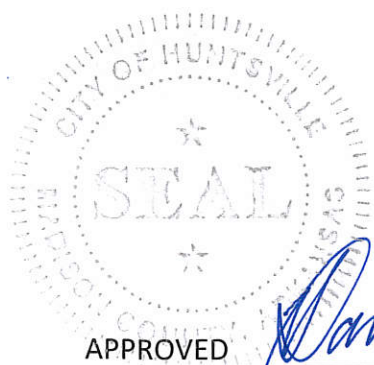
NOW THEREFORE, BE IT ORDAINED BY THE CITY COUNCIL OF THE CITY OF HUNTSVILLE, ARKANSAS:

SECTION 1. That the ward redistricting plan, consisting of a map and boundary descriptions, attached hereto and made a part hereof, be and is hereby adopted; with said map to serve hereafter as the official ward map for the city of Huntsville, Arkansas.

SECTION 2. That all previous ward maps and boundary descriptions are hereby repealed.

SECTION 3. That a duly certified copy of said map shall be submitted to the Madison County Election Commission and filed in the office of the Madison County Clerk.

PASSED AND APPROVED THIS 13TH DAY OF DECEMBER 2021.



APPROVED



Mayor Darrell Trahan

ATTEST



City Clerk Joetta Smith

Table of Contents

Redistricting Summary.....	2
District Descriptions.....	3
--District: Ward 1.....	3
--District: Ward 2.....	3
--District: Ward 3.....	4
--District: Ward 4.....	4
Splits.....	6
District Maps.....	7
--Overview.....	7
--District: Ward 1.....	8
--District: Ward 2.....	9
--District: Ward 3.....	10
--District: Ward 4.....	11
Adoption.....	12

City of Huntsville, Arkansas
Redistricting Final Report
 Huntsville City Council Wards

Redistricting Summary

In accordance with Arkansas State Law 14-43-311/14-44-102, the City of Huntsville, in the State of Arkansas does hereby adopt the districts contained in this report. Each section includes population and demographic figures associated with the district that is described based upon the data contained in U.S. Public Law 94 - 171, from the United States Census of Population of 2020. Each row of the report lists the unique numeric identification code assigned by the U.S. Census Bureau for the geographic unit contained therein. These unique areas represent Counties, Voting Tabulation Districts, and blocks that when combined altogether compose the geographic territory of the district. This listing serves as the written description of the districts.

<i>District</i>	<i>Total Population</i>	<i>Target Population</i>	<i>Deviation</i>	<i>Percent Deviation</i>	<i>White</i>	<i>Black</i>	<i>Asian</i>	<i>Native American</i>	<i>Hawaiian Pacific Islander</i>	<i>Hispanic</i>
Ward 1	725	719	6	0.83	530	2	2	6	34	93
Ward 2	698	719	-21	-2.92	474	3	4	9	53	119
Ward 3	733	719	14	1.95	520	6	0	8	89	76
Ward 4	723	719	4	0.56	563	1	0	11	46	81

City of Huntsville, Arkansas
Redistricting Final Report
 Huntsville City Council Wards

District Descriptions

District: Ward 1

<i>Split</i>	<i>Block</i>	<i>Corr. Facil.</i>	<i>Geo ID</i>	<i>Total Population</i>	<i>White</i>	<i>Black</i>	<i>Asian</i>	<i>Native American</i>	<i>Hawaiian Pacific Islander</i>	<i>Hispanic</i>
	1038		050879602001038	255	204	0	0	0	20	15
	1039		050879602001039	0	0	0	0	0	0	0
	1040		050879602001040	0	0	0	0	0	0	0
	3000		050879602003000	9	4	0	0	0	1	3
	3001		050879602003001	0	0	0	0	0	0	0
	3002		050879602003002	0	0	0	0	0	0	0
	3003		050879602003003	11	6	0	0	0	0	5
	3004		050879602003004	21	5	2	0	0	0	8
	3005		050879602003005	53	41	0	2	0	0	4
	3006		050879602003006	0	0	0	0	0	0	0
	3007		050879602003007	0	0	0	0	0	0	0
	3008		050879602003008	12	3	0	0	6	0	0
*	3009 - C		050879602003009 - C 59		45	0	0	0	1	10
*	3009 - A		050879602003009 - A 200		151	0	0	0	3	33
*	3009 - B		050879602003009 - B 32		24	0	0	0	1	5
	3010		050879602003010	29	17	0	0	0	0	8
	3011		050879602003011	24	13	0	0	0	7	1
	3012		050879602003012	20	17	0	0	0	1	1

District: Ward 2

<i>Split</i>	<i>Block</i>	<i>Corr. Facil.</i>	<i>Geo ID</i>	<i>Total Population</i>	<i>White</i>	<i>Black</i>	<i>Asian</i>	<i>Native American</i>	<i>Hawaiian Pacific Islander</i>	<i>Hispanic</i>
	1025		050879602001025	35	15	0	0	0	0	14
	1027		050879602001027	0	0	0	0	0	0	0
	1041		050879602001041	61	54	0	0	0	2	5
	1042		050879602001042	32	23	3	0	0	0	6
	1043		050879602001043	32	17	0	0	0	4	11
	1044		050879602001044	9	0	0	0	1	5	1
	1045		050879602001045	0	0	0	0	0	0	0
	1046		050879602001046	102	82	0	0	0	11	3
	1047		050879602001047	40	19	0	0	0	13	7
	1048		050879602001048	12	3	0	0	2	0	6
	1049		050879602001049	18	10	0	0	1	0	6
	1050		050879602001050	21	17	0	0	0	0	3
	1051		050879602001051	41	27	0	4	0	0	8
	1052		050879602001052	46	27	0	0	1	15	3
	1053		050879602001053	15	7	0	0	0	1	1
	1054		050879602001054	20	16	0	0	0	0	2

Redistricting Final Report

Huntsville City Council Wards

1055	050879602001055	18	16	0	0	1	0	0
1056	050879602001056	26	24	0	0	0	0	2
1057	050879602001057	36	20	0	0	1	0	15
1058	050879602001058	0	0	0	0	0	0	0
1059	050879602001059	12	5	0	0	0	0	4
1062	050879602001062	12	9	0	0	0	0	3
1063	050879602001063	24	21	0	0	0	0	2
1064	050879602001064	19	12	0	0	2	0	5
1065	050879602001065	15	10	0	0	0	0	3
1066	050879602001066	18	15	0	0	0	0	3
1067	050879602001067	0	0	0	0	0	0	0
1068	050879602001068	12	10	0	0	0	1	0
1069	050879602001069	22	15	0	0	0	1	6
1070	050879602001070	0	0	0	0	0	0	0
1071	050879602001071	0	0	0	0	0	0	0

District: Ward 3

Split	Block	Corr. Facil.	Geo ID	Total Population	White	Black	Asian	Native American	Hawaiian Pacific Islander	Hispanic
	1006		050879602001006	0	0	0	0	0	0	0
	1007		050879602001007	4	0	0	0	2	0	2
	1008		050879602001008	7	2	2	0	2	0	0
	1009		050879602001009	9	4	0	0	0	4	0
	1013		050879602001013	39	2	0	0	0	31	5
*	1024 - A		050879602001024 - A	41	28	0	0	0	8	4
*	1024 - B		050879602001024 - B	174	118	0	0	2	34	16
	1025		050879604001025	0	0	0	0	0	0	0
	1026		050879602001026	50	32	0	0	0	3	14
	1028		050879602001028	28	21	0	0	0	2	1
	1029		050879602001029	0	0	0	0	0	0	0
	1032		050879602001032	34	28	0	0	1	0	2
	1033		050879602001033	0	0	0	0	0	0	0
	1034		050879602001034	0	0	0	0	0	0	0
	1035		050879602001035	24	20	0	0	0	0	3
	1036		050879602001036	0	0	0	0	0	0	0
	1037		050879602001037	8	1	3	0	0	0	0
	2002		050879602002002	57	42	0	0	0	2	11
	2003		050879602002003	6	5	0	0	0	0	1
	2004		050879602002004	23	17	0	0	0	5	1
	2007		050879602002007	6	4	0	0	0	0	0
*	2020 - A		050879602002020 - A	210	192	0	0	1	0	15
	2021		050879602002021	13	4	1	0	0	0	1

District: Ward 4

City of Huntsville, Arkansas
Redistricting Final Report
 Huntsville City Council Wards

<i>Split</i>	<i>Block</i>	<i>Corr. Facil.</i>	<i>Geo ID</i>	<i>Total Population</i>	<i>White</i>	<i>Black</i>	<i>Asian</i>	<i>Native American</i>	<i>Hawaiian Pacific Islander</i>	<i>Hispanic</i>
*	1024 - C		050879602001024 - C	185	125	0	0	2	36	17
	1060		050879602001060	0	0	0	0	0	0	0
	1061		050879602001061	0	0	0	0	0	0	0
	2006		050879602002006	0	0	0	0	0	0	0
	2008		050879602002008	6	3	0	0	0	0	2
	2014		050879602002014	130	115	0	0	1	0	10
	2016		050879602002016	13	9	0	0	1	0	3
	2017		050879602002017	62	59	0	0	0	2	1
	2018		050879602002018	34	21	0	0	1	0	11
	2019		050879602002019	35	29	0	0	0	0	4
*	2020 - B		050879602002020 - B	36	33	0	0	0	0	3
	2023		050879602002023	35	32	0	0	0	0	2
	2024		050879602002024	24	13	0	0	0	1	6
	2025		050879602002025	143	113	1	0	6	6	15
	2026		050879602002026	0	0	0	0	0	0	0
	2027		050879602002027	12	7	0	0	0	0	5
	2028		050879602002028	8	4	0	0	0	1	2

Redistricting Final Report

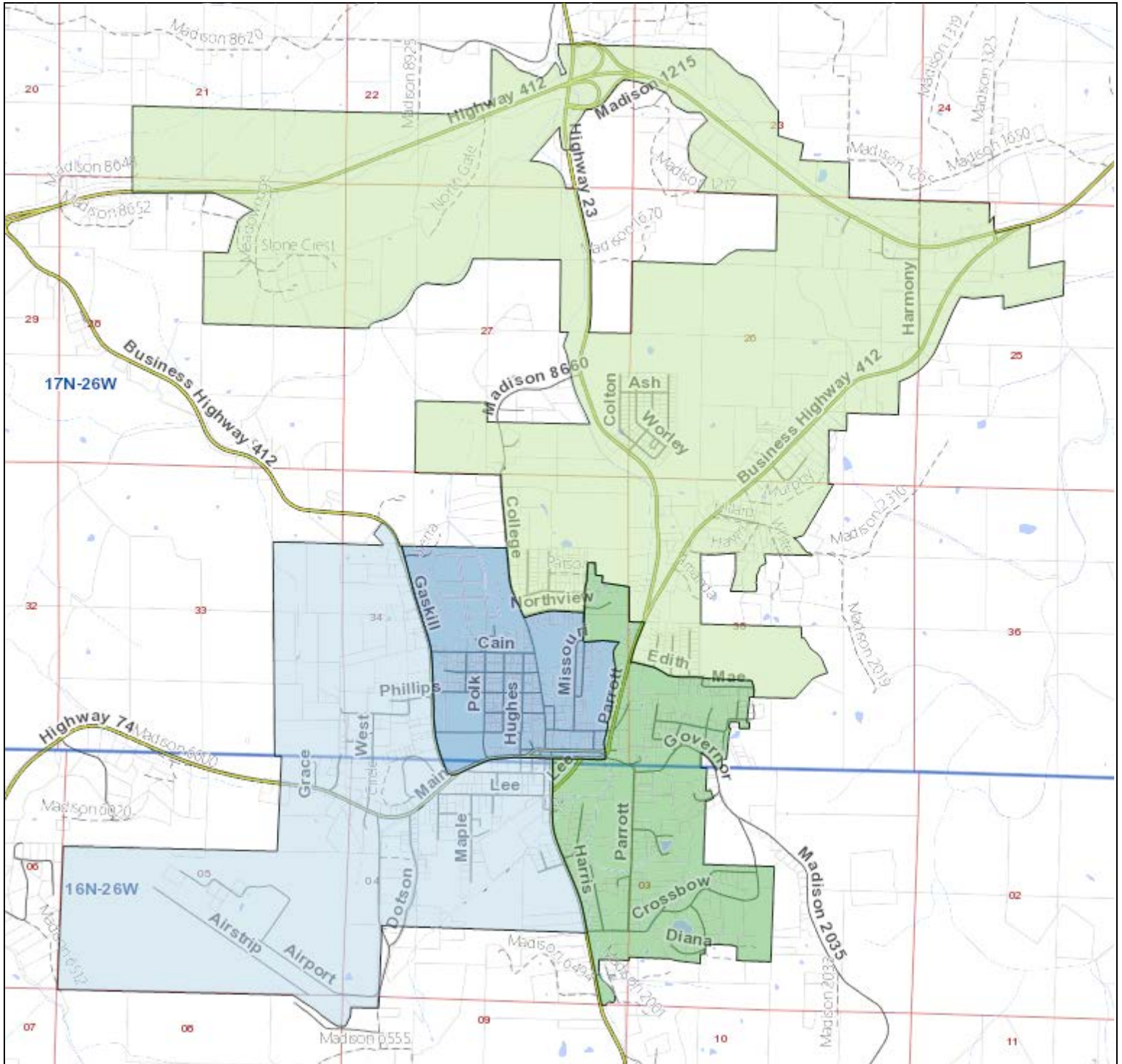
Huntsville City Council Wards

Census Block Splits

District	Block	Geo ID	Split ID	Description
Ward 1	3009	050879602003009	A	Being west of the following described line within census block 050879602003009. Beginning at the corner of Lee Avenue and Locust Street, thence southerly on Locust Street to the end of Locust Street, thence continuing southerly to the end of Cypress Court, thence southwesterly along Cypress Court to Maple Street, thence southerly with Maple Street to the end of Maple Street, thence continuing in a straight line south to an unnamed stream with a USGS reach code of 11010001001830, thence southwesterly along said stream to the south line of census block 050879602003009.
Ward 1	3009	050879602003009	B	Being north and east of the following described line within census block 050879602003009. Beginning at the corner of Lee Avenue and Locust Street, thence southerly on Locust Street to the end of Locust Street, thence continuing southerly to the end of Cypress Court, thence southwesterly along Cypress Court to Maple Street, thence southerly with Maple Street to the end of Maple Street, thence continuing in a straight line south to an unnamed stream with a USGS reach code of 11010001001830, thence northeasterly along said stream to the east line of census block 050879602003009.
Ward 1	3009	050879602003009	C	Being all the area south and east of an unnamed stream with a USGS reach code of 11010001001830, in census block 050879602003009.
Ward 3	1024	050879602001024	A	Being south and west of the following described line within the census block 050879602001024. Beginning at the northwest corner of Oak Hills subdivision, then running east along the north line of Oak Hills subdivision to the centerline of Acorn Street, thence south along Acorn Street to the south line of census block 050879602001024.
Ward 3	1024	050879602001024	B	Being all of census block 050879602001024, less and except portions described in block splits A & C.
Ward 3	2020	050879602002020	A	Being north and east of the following described line within census block 050879602002020. Beginning at the intersection of North Parrott Drive and Edith Avenue, thence following Edith Avenue easterly to Mae Street, thence following the border of Rockwood Heights Phase III easterly and southerly to the south boundary of census block 050879602002020.
Ward 4	1024	050879602001024	C	Being south and east of the following described line within the census block 050879602001024. Beginning at the intersection of Cedar Heights and Missouri Street, thence running approximately 925 feet with Missouri Street northerly to the south boundary of real estate assessor parcel 075-00661-000, thence following the southerly line of parcel 075-00661-000 easterly approximately 142 feet, southerly approximately 225 feet, easterly approximately 134 feet, southerly approximately 126 feet, and southeasterly approximately 509 feet to the east line of section 34, township 17 north, range west, thence south along said section line to the southwest corner of the southwest quarter of the northwest quarter of section 35, township 17 north, range 26 west, thence east along the said quarter quarter line to the east line of census block 050879602001024.
Ward 4	2020	050879602002020	B	Being south and west of the following described line within census block 050879602002020. Beginning at the intersection of North Parrott Drive and Edith Avenue, thence following Edith Avenue easterly to Mae Street, thence following the border of Rockwood Heights Phase III easterly and southerly to the south boundary of census block 050879602002020.

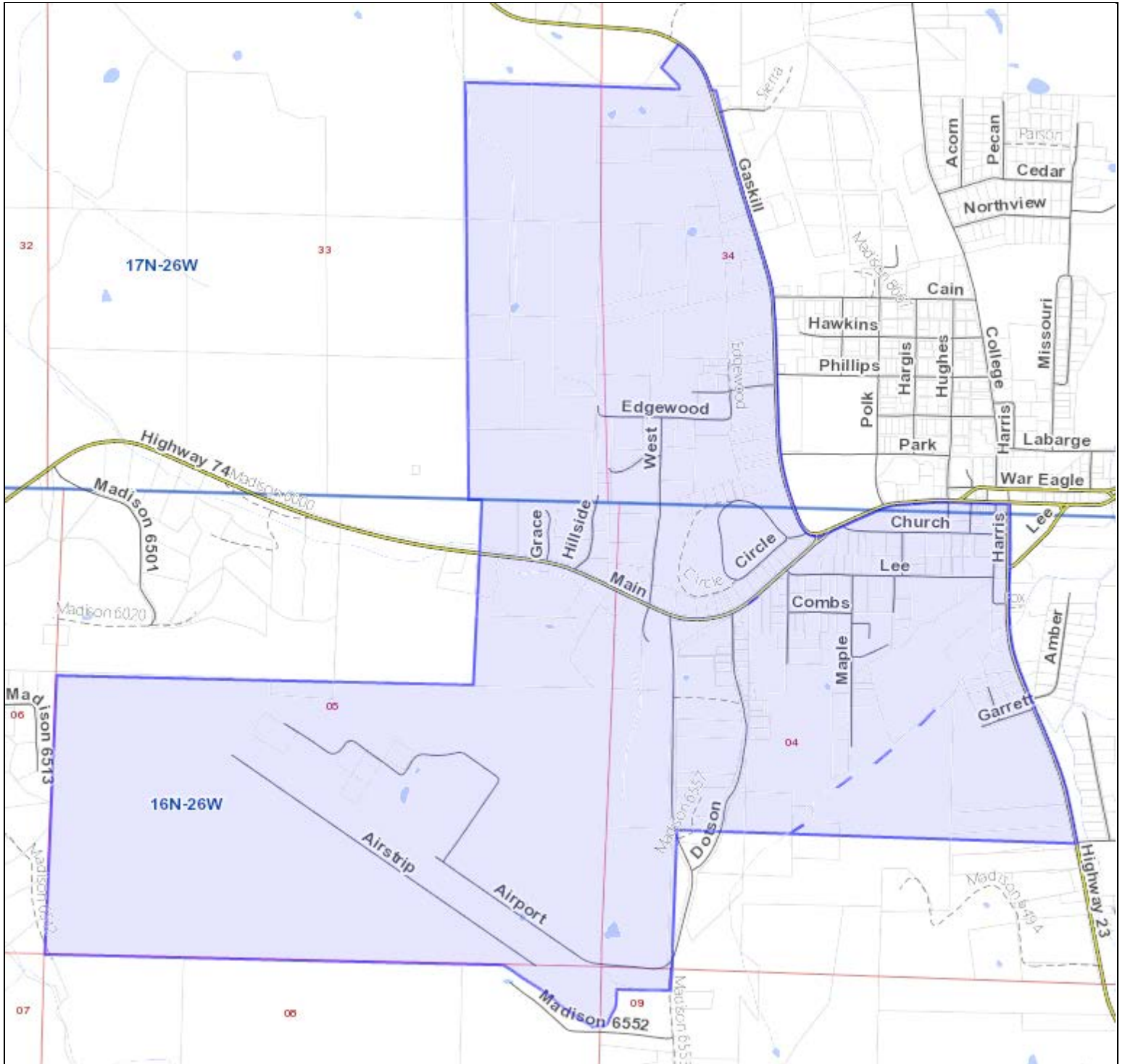
District Maps

Overview



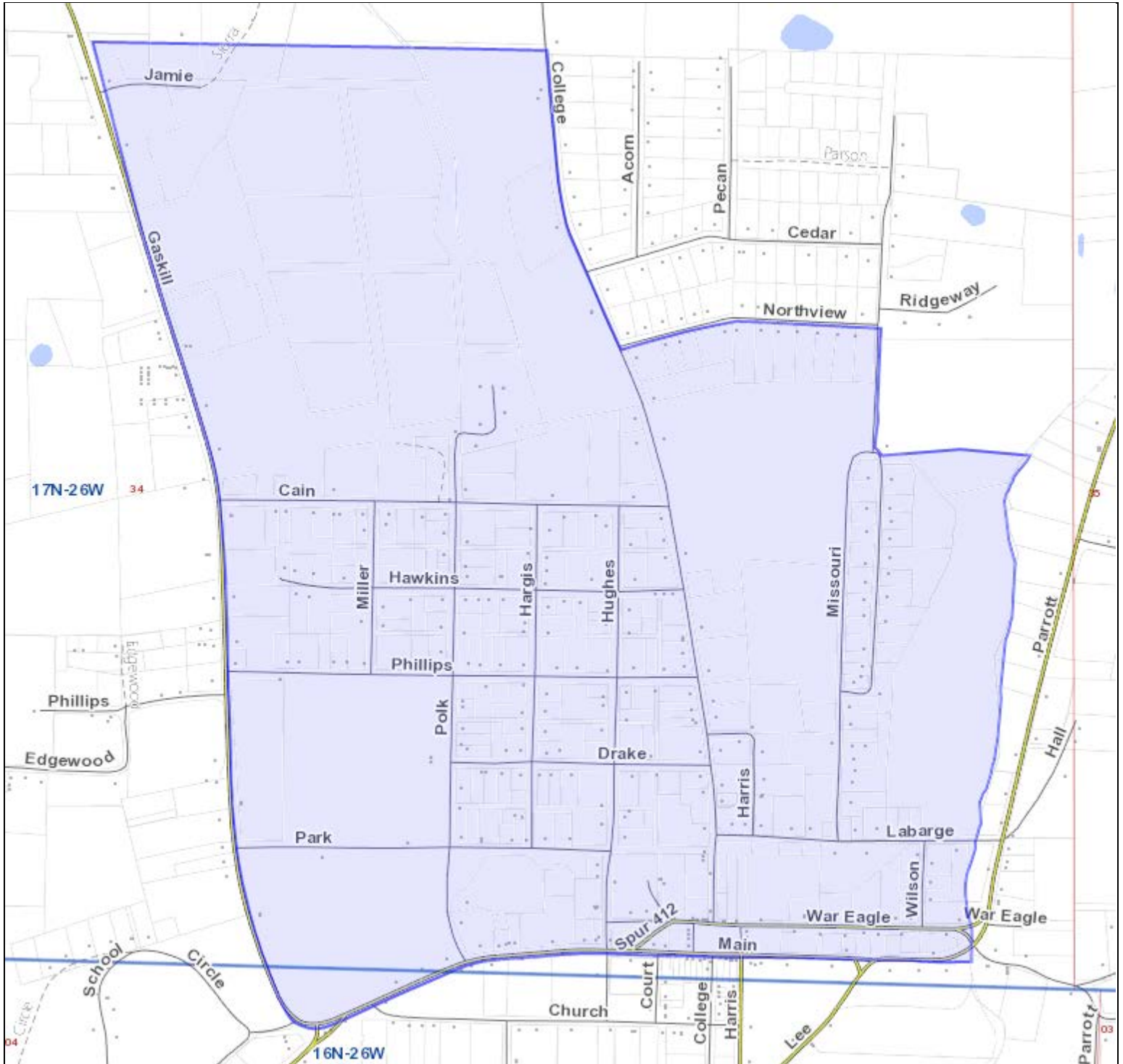
City of Huntsville, Arkansas
Redistricting Final Report
Huntsville City Council Wards

District: Ward 1



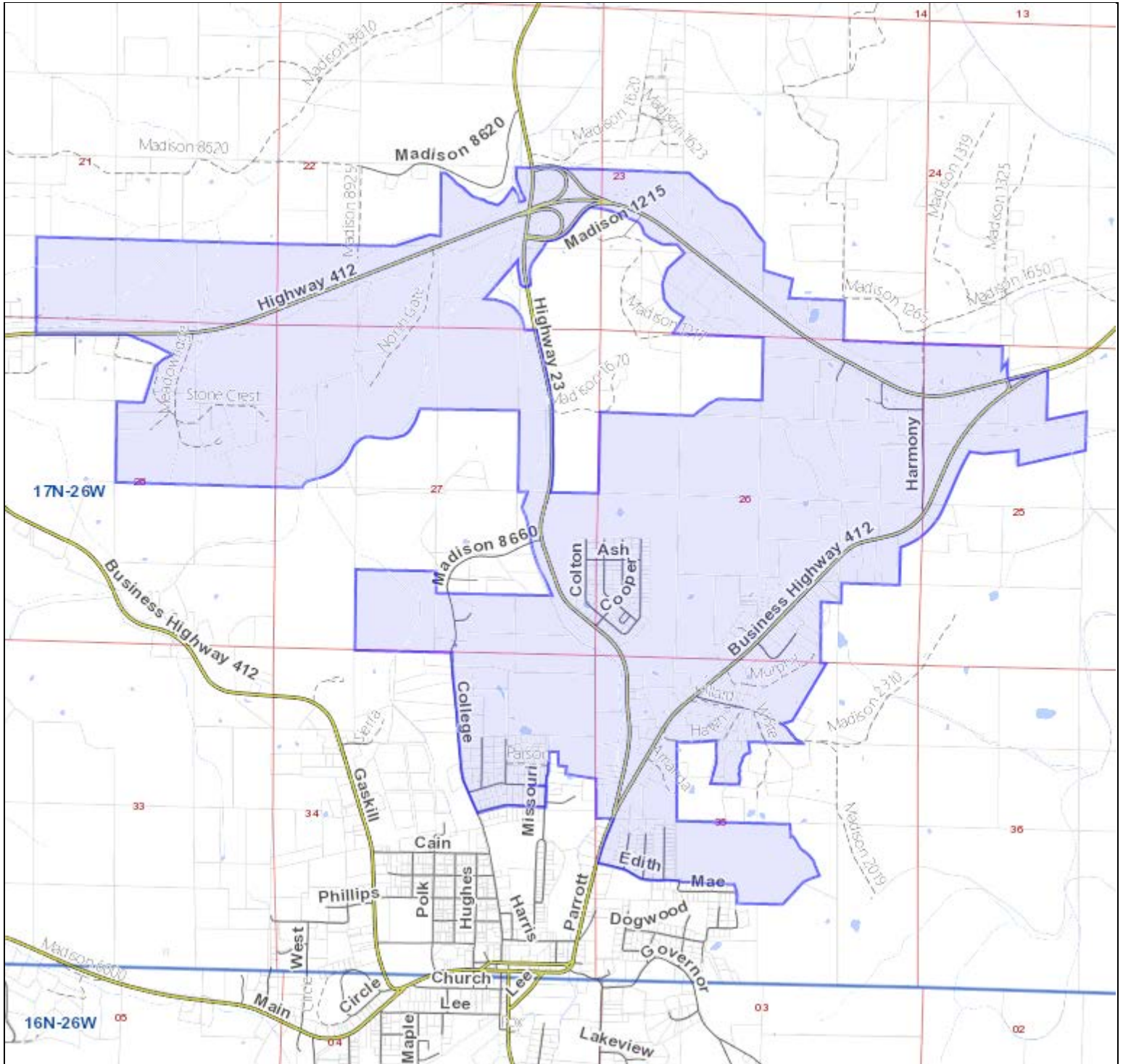
City of Huntsville, Arkansas
Redistricting Final Report
Huntsville City Council Wards

District: Ward 2



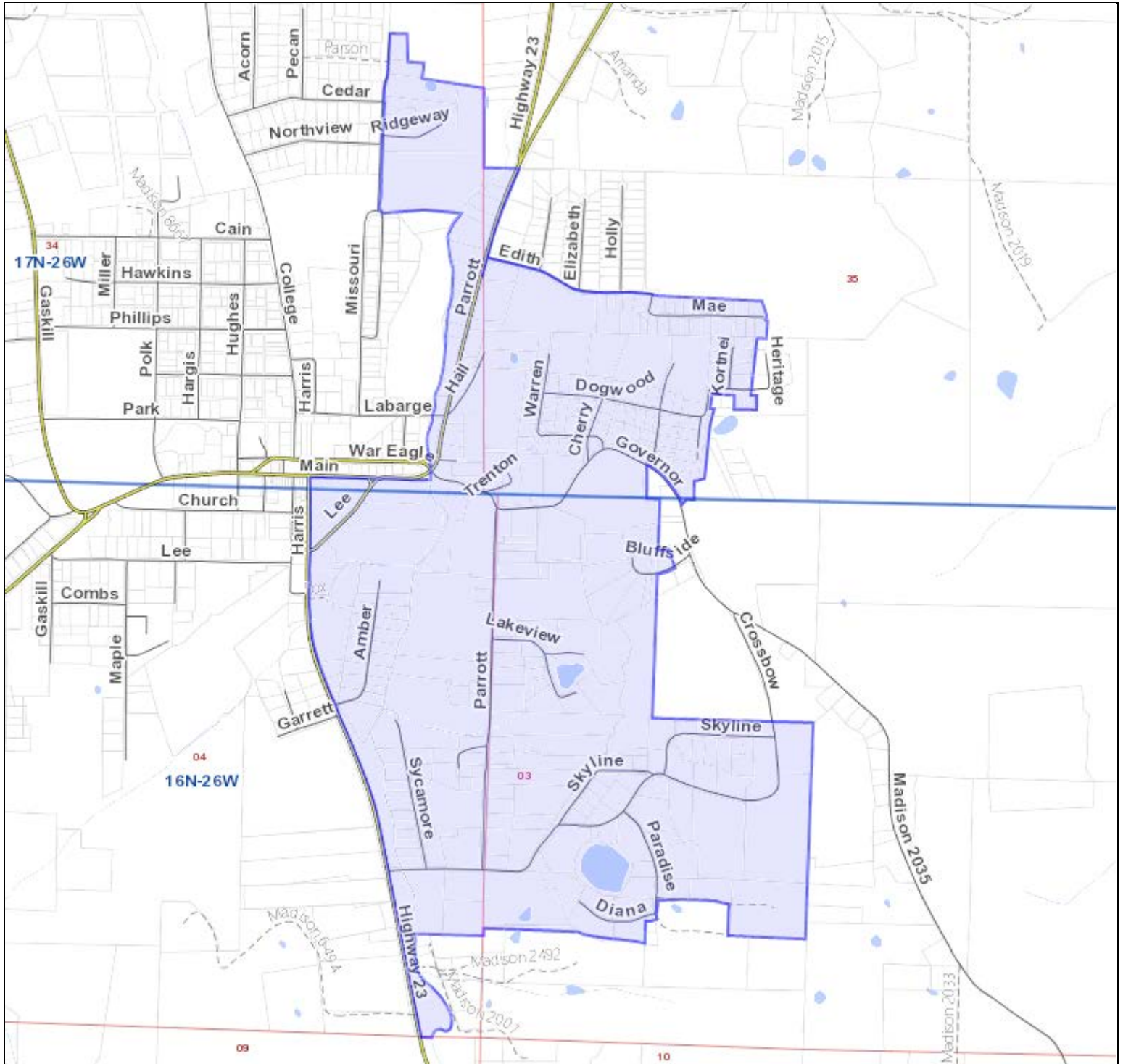
City of Huntsville, Arkansas
Redistricting Final Report
Huntsville City Council Wards

District: Ward 3



City of Huntsville, Arkansas
Redistricting Final Report
Huntsville City Council Wards

District: Ward 4



City of Huntsville, Arkansas
Redistricting Final Report
Huntsville City Council Wards

Adoption

Adopted this 13th day of December, 2021 by City Council of Huntsville, AR

Danell Drahan
Name

Mayor
Title

12/13/21
Date

Name

Title

Date

Name

Title

Date

Name

Title

Date

ATTEST:

Jocette Smith
Name

City Clerk
Title

12-13-21
Date

