

RESOLUTION OF THE JASPER SCHOOL DISTRICT
BOARD OF DIRECTORS

WHEREAS, the Jasper School District Board of Directors met in a regular, open, and properly-called meeting on November 11, 2021 in Jasper, AR;

WHEREAS, six (6) members were present, a quorum was declared by the chair;

WHEREAS, the Jasper School District has, pursuant to Ark. Code Ann. § 6-13-631, presented to this Board a board member zone plan which includes a map showing the boundaries of the seven (7) single-member district zones created and documentation showing the population by race in each zone, which is attached as Exhibit A to this Resolution; and

WHEREAS, the Board hereby approves the attached zone plan and map, subject to the approval of the Newton County Board of Election Commissioners; and

WHEREAS, upon being advised by the Newton County Board of Election Commissioners, that the zone plan is approved, it is the intent of this Board to officially submit the zone plan to the Newton County Clerk; and

WHEREAS, upon filing the approved zone plan with the Newton County Clerk, the Board shall cause elections to be held all seven (7) of its single-member zones or as many of its zones and/or positions as are necessary to comply with the requirements of the Voting Rights Act at the May 2022 annual school election, in accordance with the zone plan and applicable state law;

NOW THEREFORE, this Board hereby authorizes the Superintendent of the Jasper School District to immediately transmit the attached zone plan and map to the Newton County Board of Election Commissioners and, upon the Superintendent's receipt of approval of the attached zone plan by the Newton County Board of Election Commissioners, bring the matter of the final approval and filing of the zone plan back to this Board for any further action required.


Board President

11-11-21
Date


Board Secretary

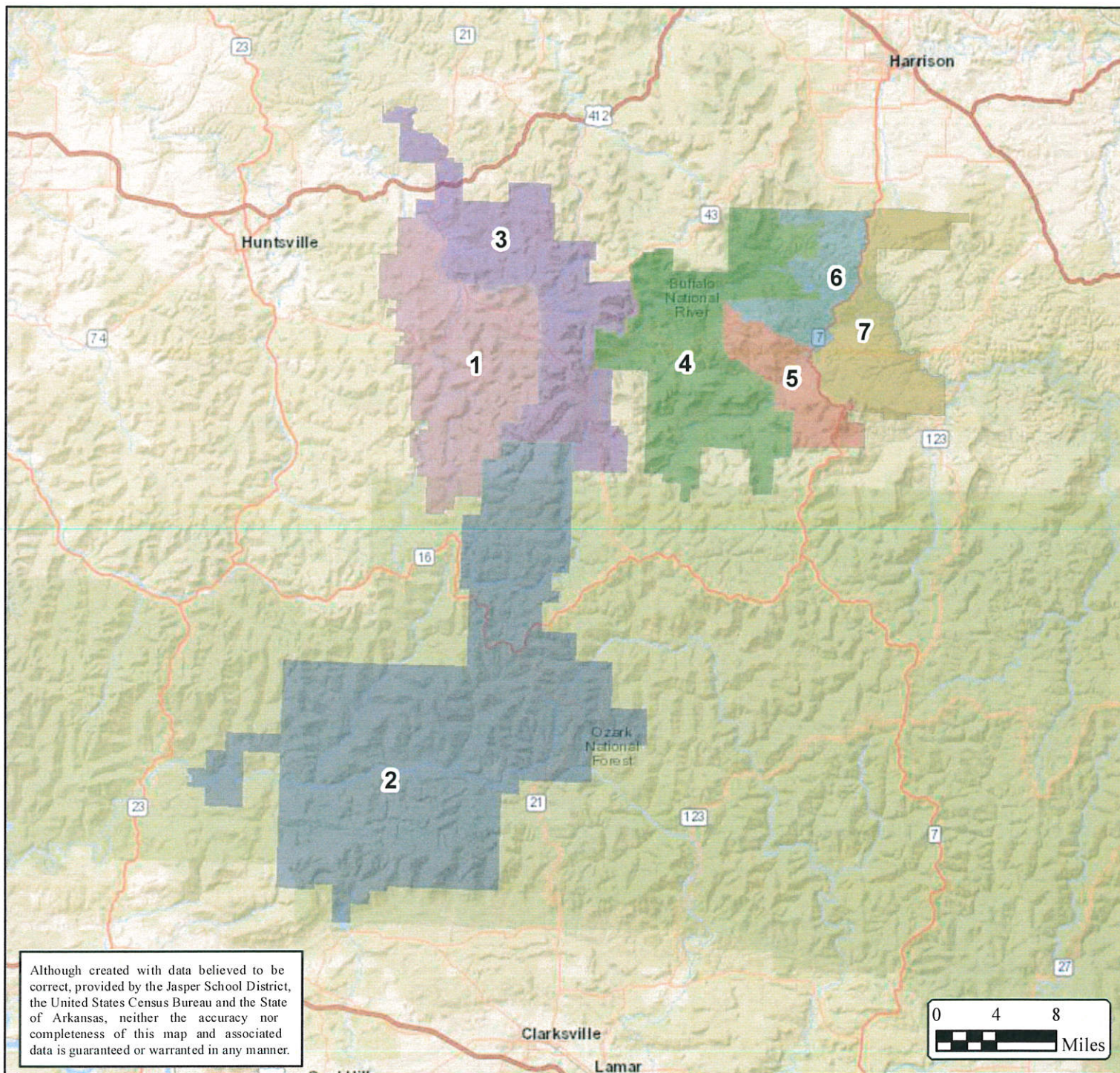
11-11-21
Date



Jasper School District

School Board Zones Overview - Phase 2

Map Created: November 2, 2021



Although created with data believed to be correct, provided by the Jasper School District, the United States Census Bureau and the State of Arkansas, neither the accuracy nor completeness of this map and associated data is guaranteed or warranted in any manner.

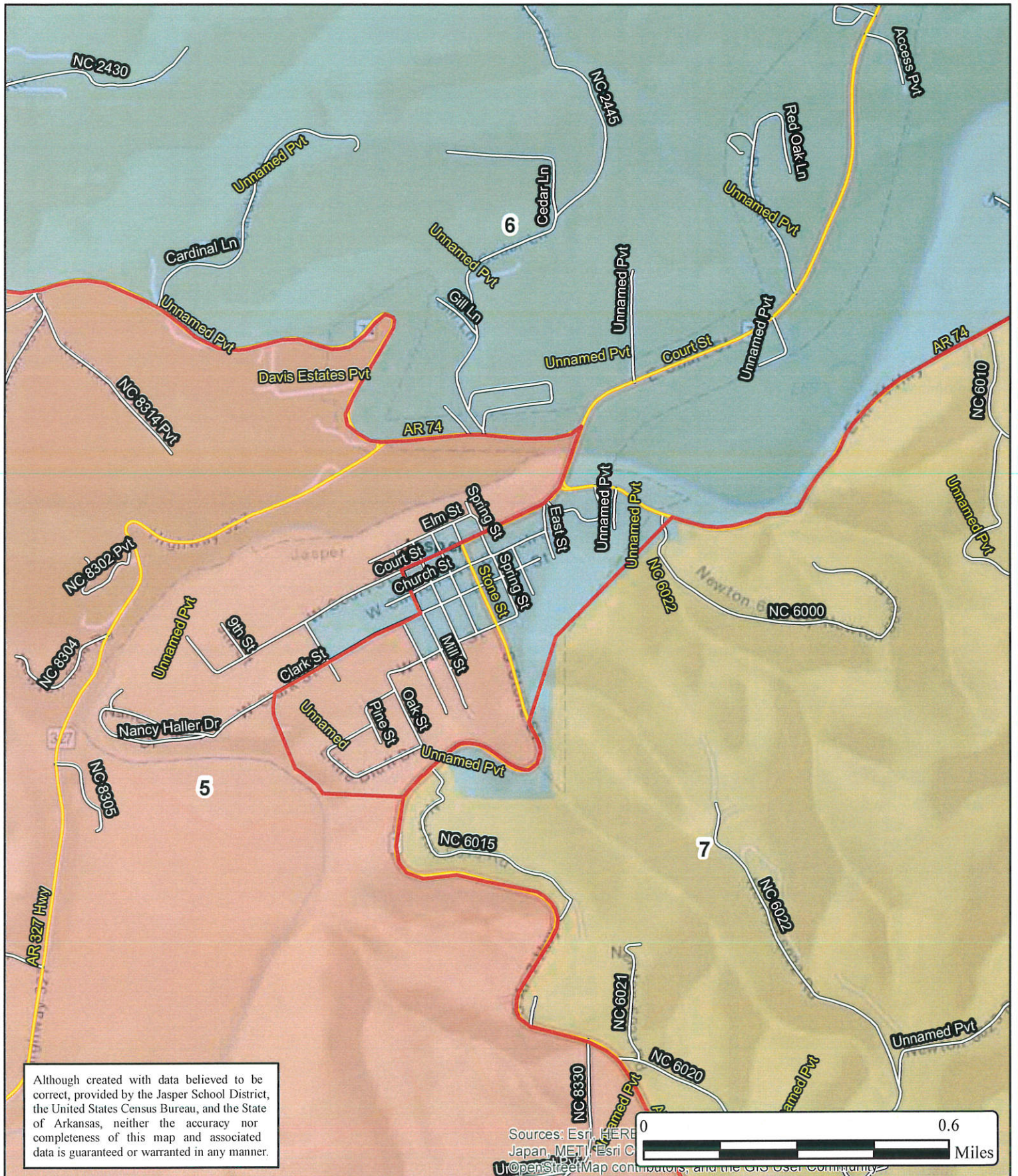
Population Statistics												
Zone	Population	% Deviation	%White	%Black	%Hispanic	%Amindian	%Asian	%Hawaiian	%Other	% 2+ Races	18 +	18+ % Deviation
1	744	-0.52%	84.95%	0.13%	3.36%	1.21%	2.02%	0.27%	0.00%	8.06%	572	-6.27%
2	779	4.16%	84.34%	0.77%	3.34%	0.64%	0.51%	0.00%	0.00%	10.40%	628	2.90%
3	715	-4.39%	91.61%	0.00%	1.40%	1.40%	0.00%	0.00%	0.56%	5.03%	570	-6.60%
4	772	3.23%	93.26%	0.00%	1.30%	1.68%	0.00%	0.00%	0.00%	3.76%	680	11.42%
5	729	-2.52%	90.95%	0.41%	1.37%	1.92%	0.41%	0.00%	0.14%	4.80%	600	-1.69%
6	739	-1.18%	93.64%	0.00%	1.08%	0.54%	0.54%	0.14%	0.14%	3.92%	610	-0.05%
7	757	1.22%	90.22%	0.00%	1.45%	0.53%	0.53%	0.00%	0.00%	7.27%	612	0.28%

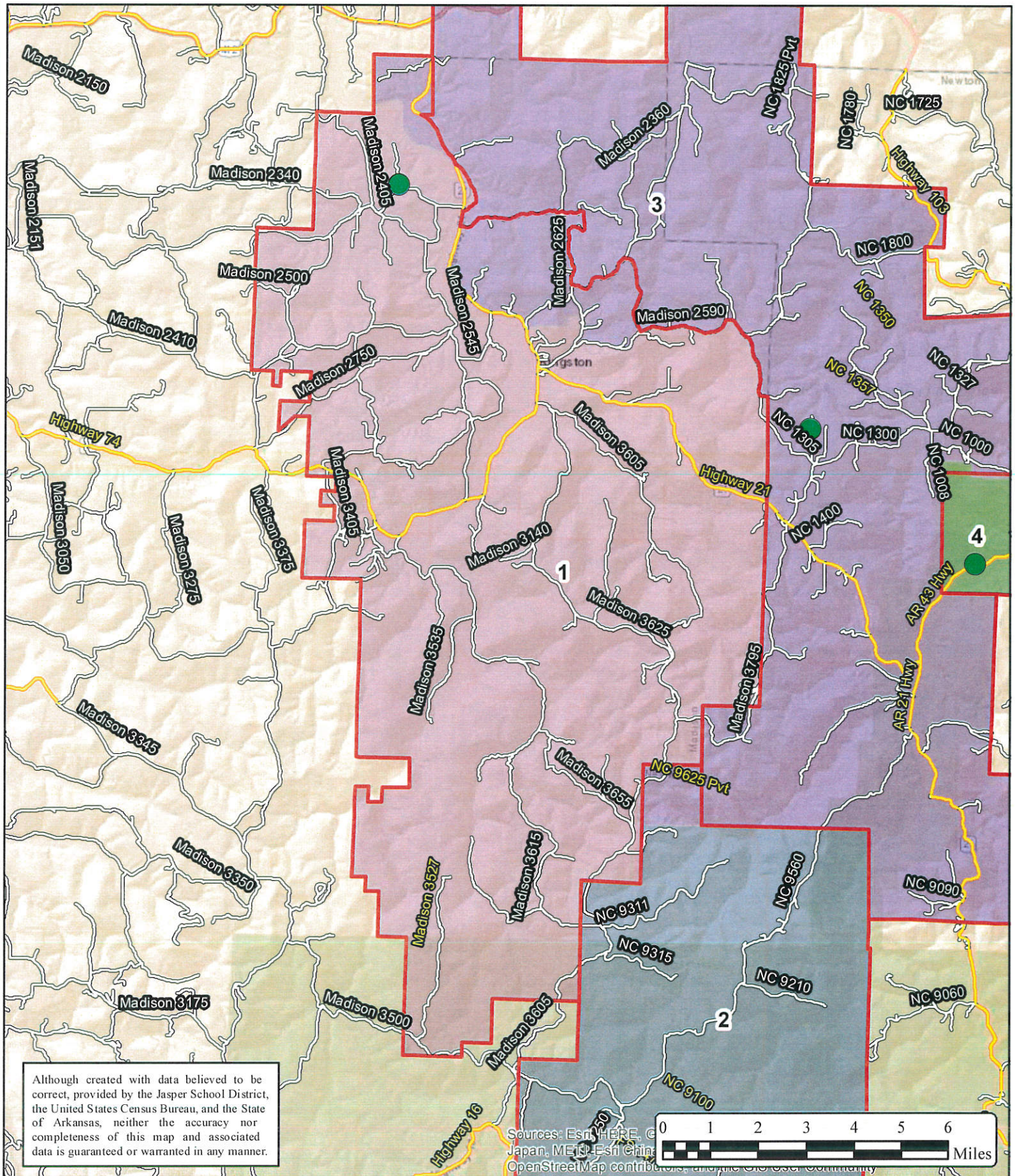


Jasper School District

Jasper Area

Map Created: November 2, 2021



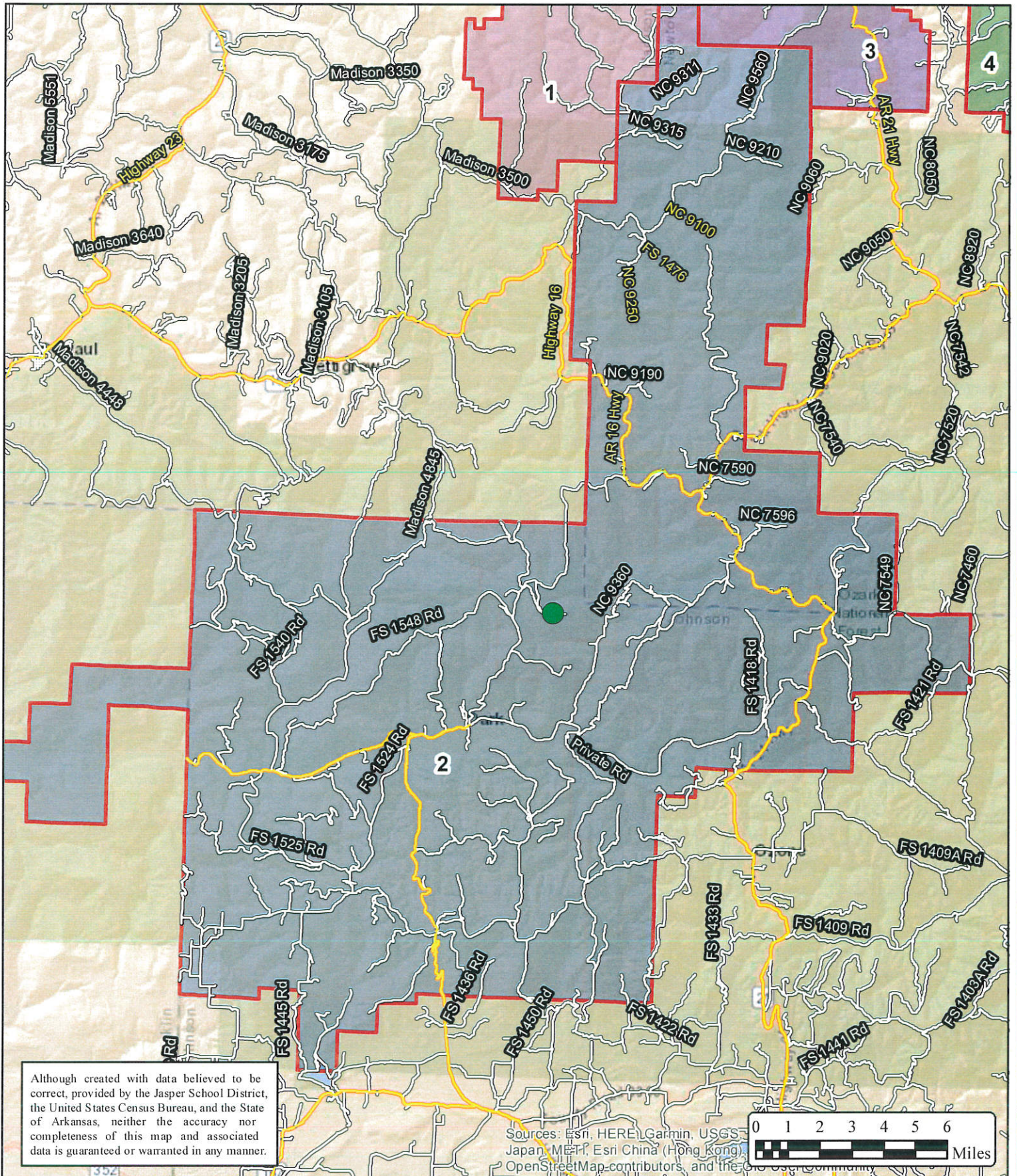




Jasper School District

School Board Zones Phase 2 - Zone 2

Map Created: November 2, 2021

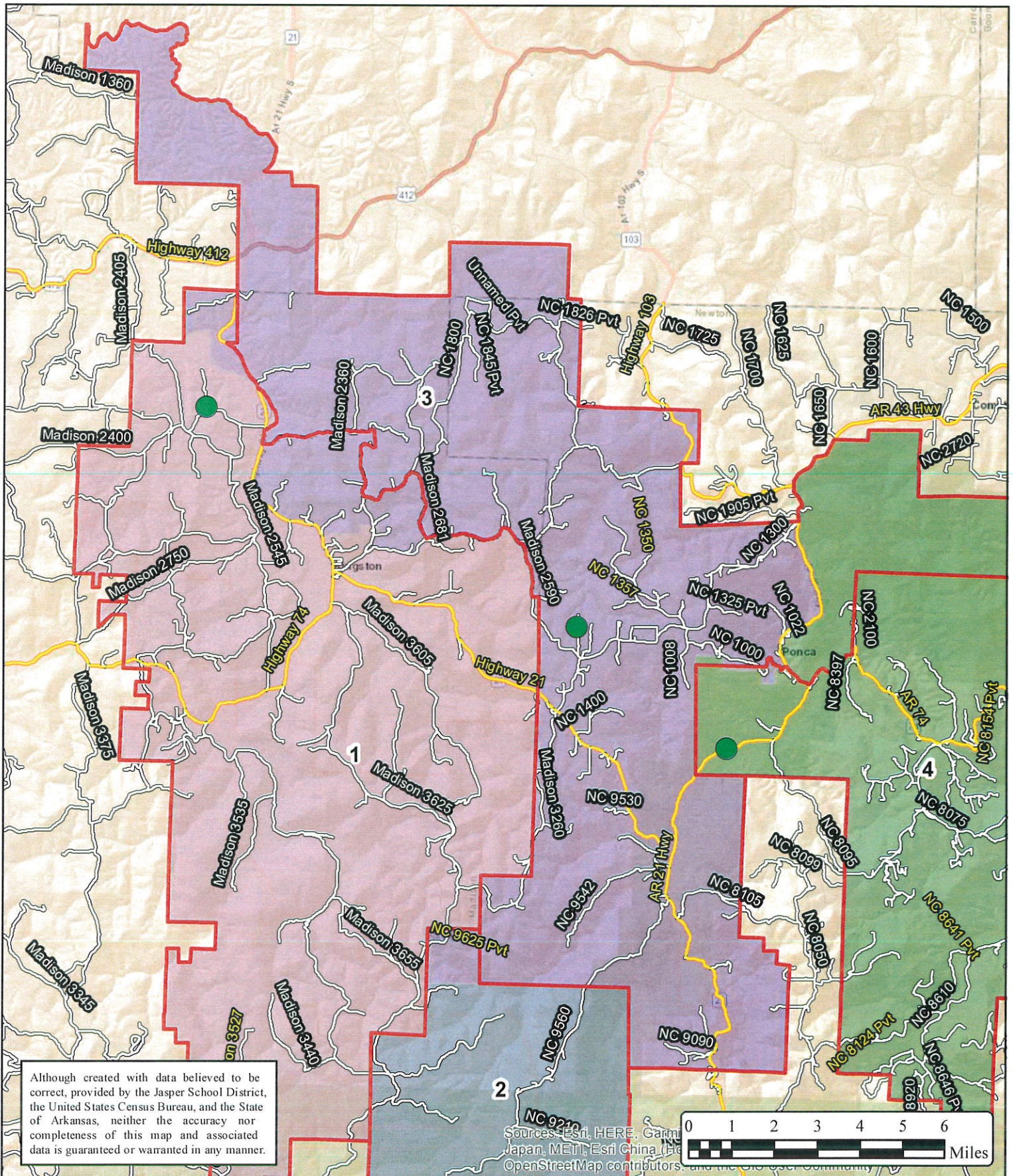


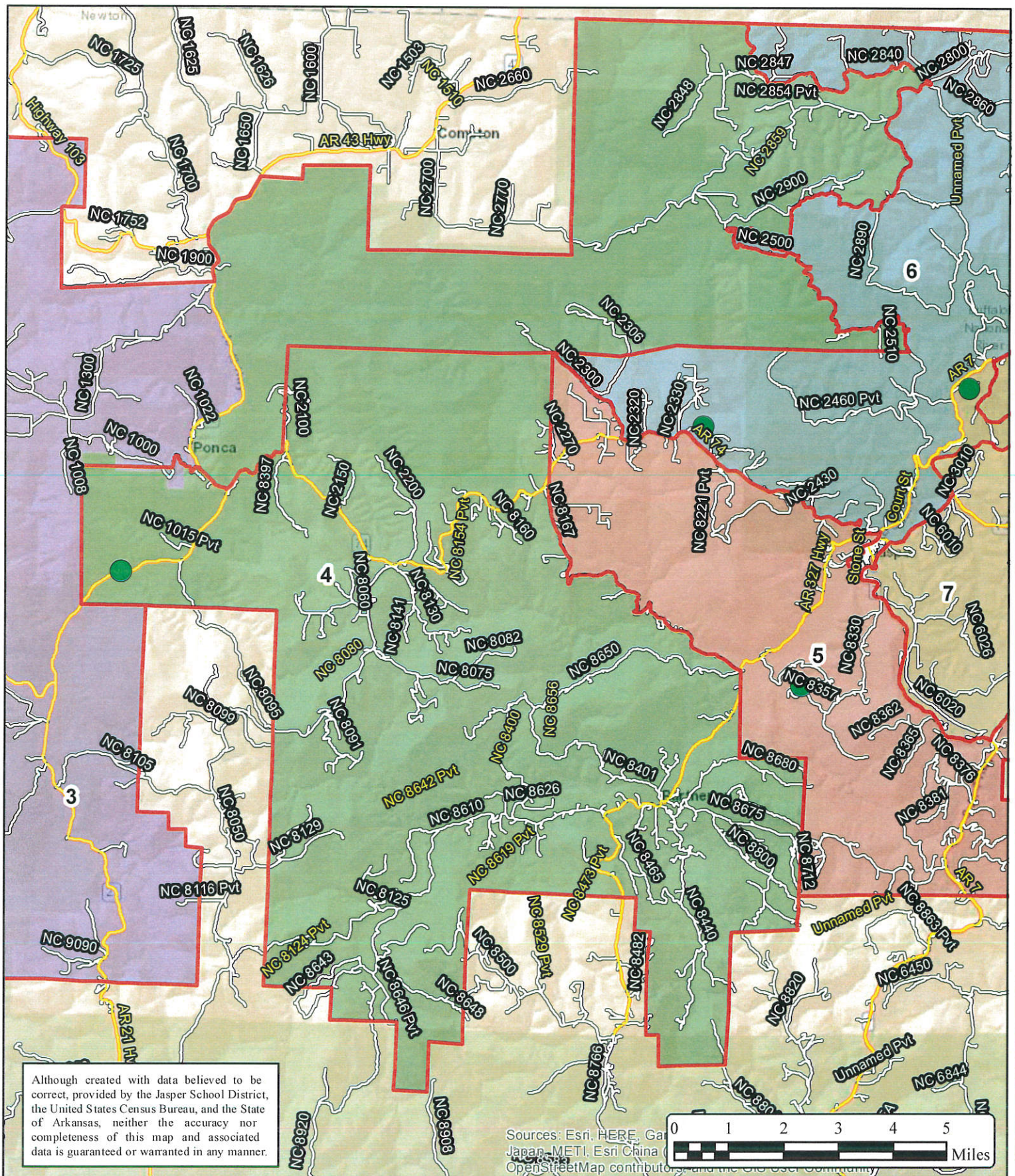


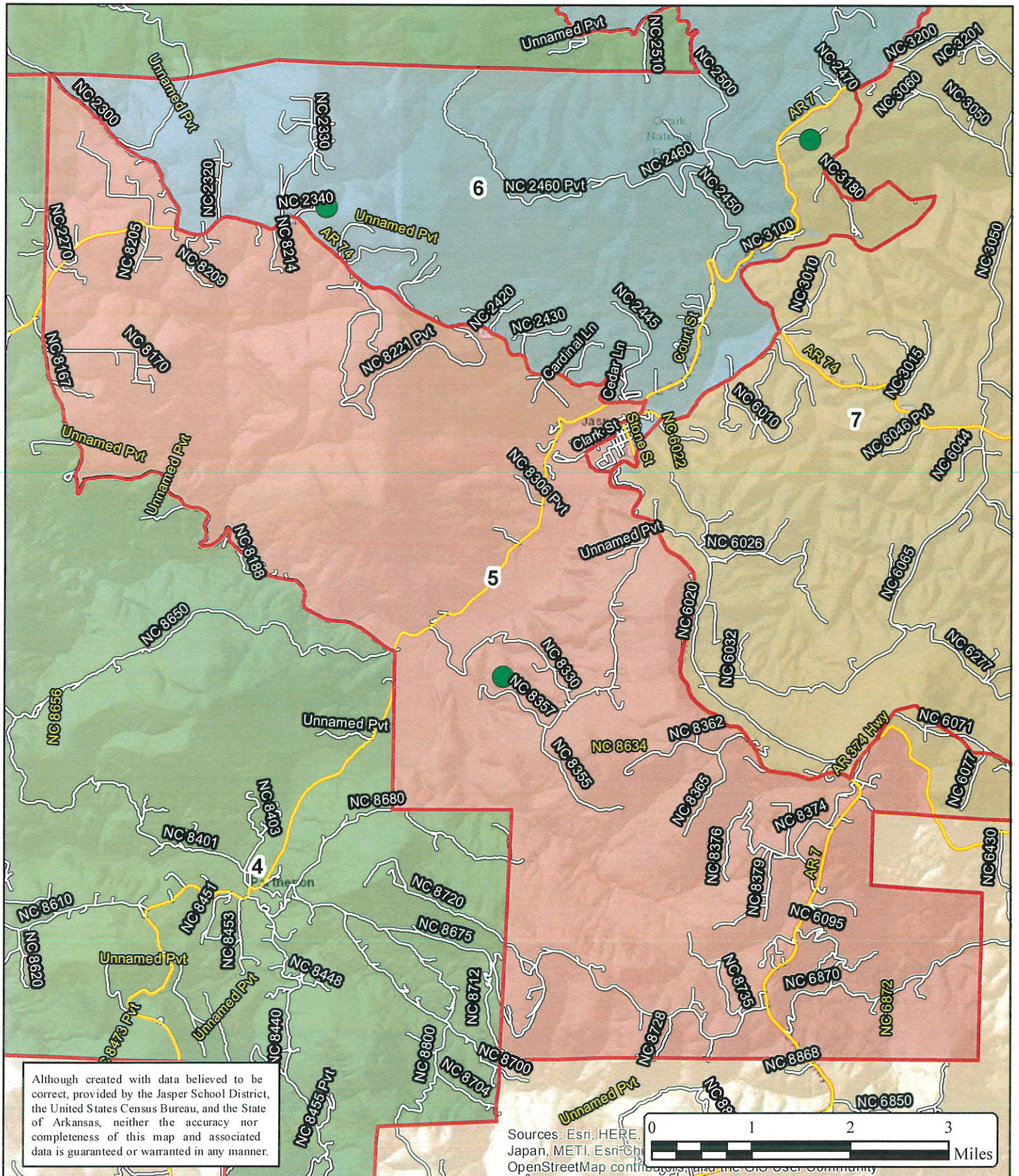
Jasper School District

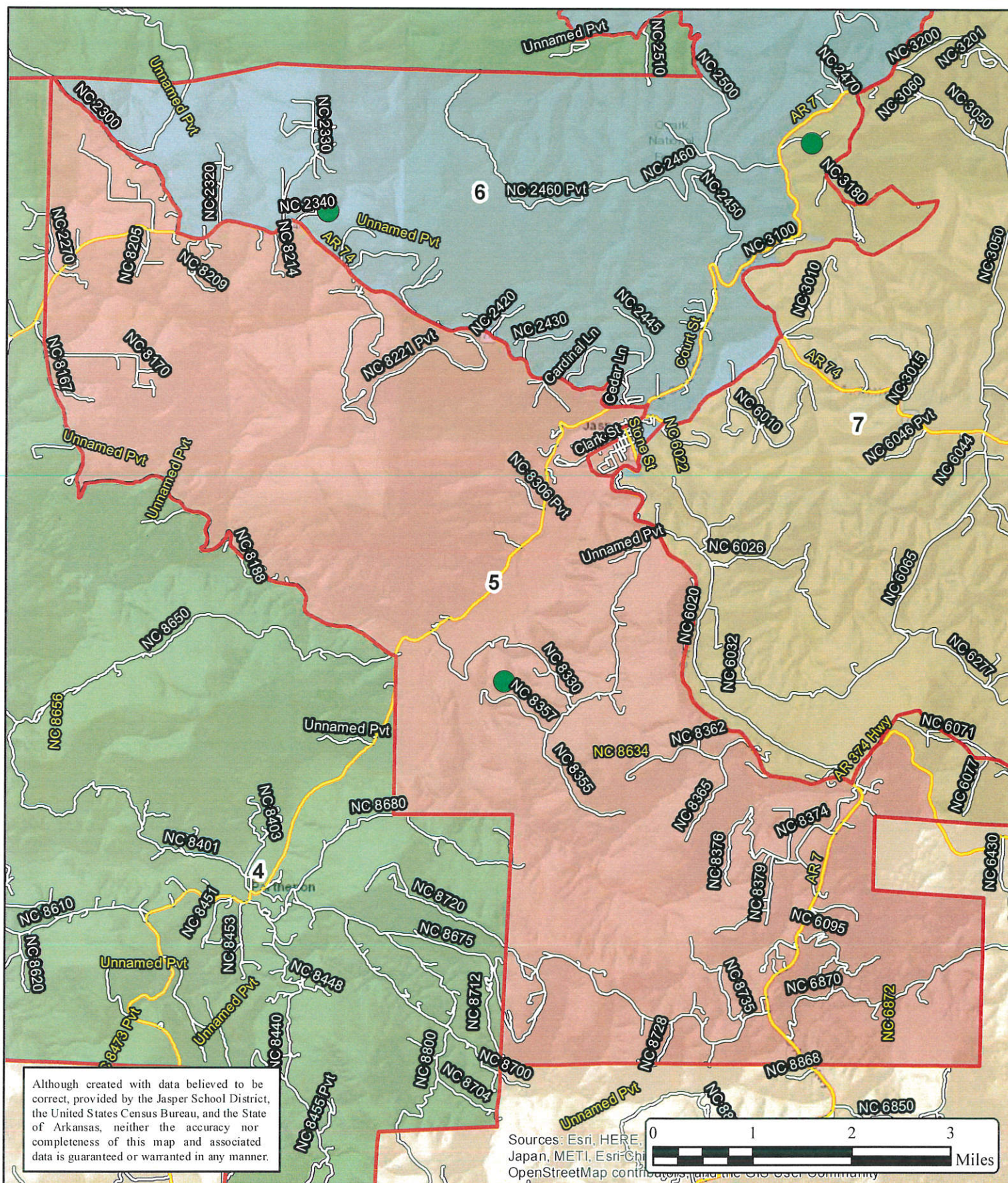
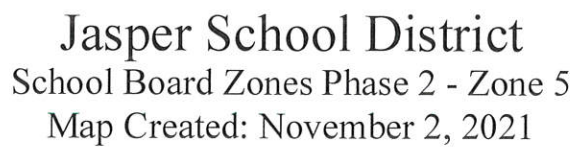
School Board Zones Phase 2 - Zone 3

Map Created: November 2, 2021











Jasper School District

School Board Zones Phase 2 - Zone 7

Map Created: November 2, 2021

